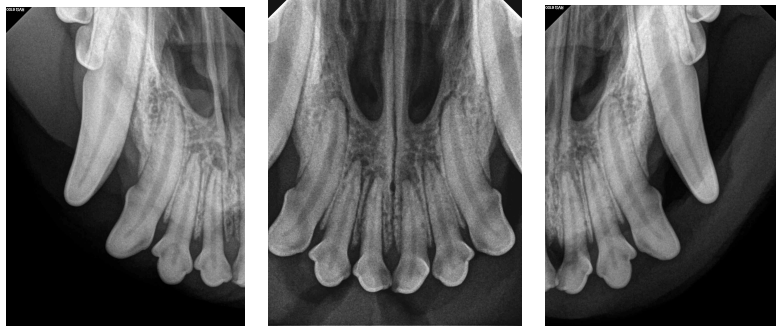


AVDC Radiograph Set - Dog

Maxilla



103

102 to 202
201 tipped mesial

203



104 lateral



204 lateral

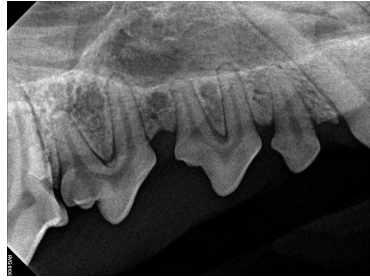


104 rostrocaudal

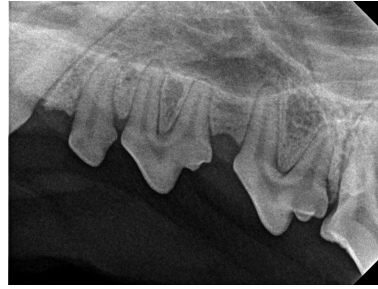


204 rostrocaudal

AVDC Radiograph Set - Dog



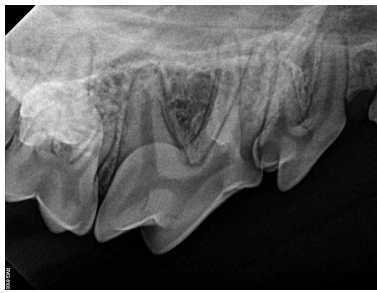
105 to 107



205 to 207



108 lateral



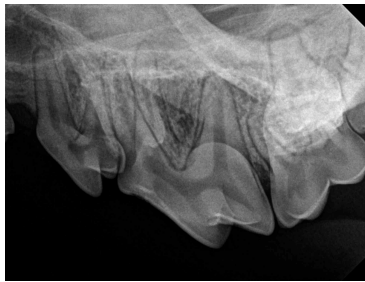
108 distolateral



109 to 110



208 lateral



208 distolateral

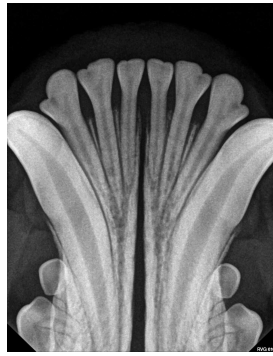


209 to 210

Mandible



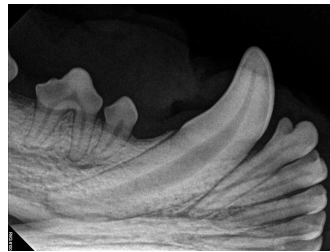
404



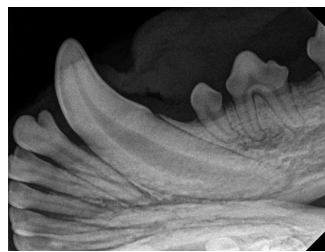
403 to 303



304



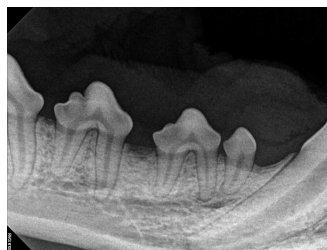
404 lateral



304 lateral



408
embriated to 409



405 to 407



305 to 307



308
embriated to 309

AVDC Radiograph Set - Dog



411, 410



409



309



310, 311